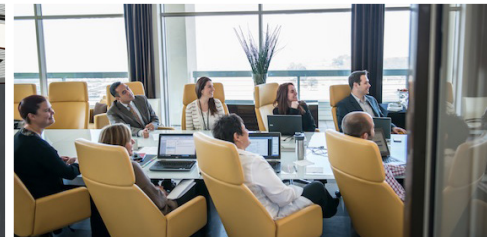


## Hospitality and Conference Services

Call us today to make arrangements for a flawless and memorable event.

T: 866.388.8273 (toll-free)  
T: 858.534.4220 (local)  
E: meetings@ucsd.edu



## THE VILLAGE

The Village is known for its urban feel and focus on sustainability, with apartments that boast partial and full ocean views. Located adjacent to the Rady's School of Management, the community is also within walking distance to the Torrey Pines Glider port, RIMAC recreation facility, Torrey Pines State Beach/Natural Reserve, and the world famous Torrey Pines Golf Course.

### ACCOMMODATIONS

The community features a total of 13 buildings, two of which are high rises with incredible ocean views and four low-rise eco-flats. All of the resident apartment homes feature modern amenities, a sleek design aesthetic, and innovative sustainable amenities—which were key to earning its LEED Gold Certification.

### AMENITIES

Bi-weekly cleaning of common areas, easy access to laundry facilities, and Wi-Fi are available in all residential areas. Option for Triton Blue, Triton Gold and Triton Plus housekeeping services.

### MEETING SPACES

The Meeting Rooms on Fifteen are perched atop the community's highest tower, offering expansive coastal and mountain views, comfortable accommodations, a relaxed floor plan, and the latest in high-tech audio/visual equipment. Three additional meeting rooms are located in Building 2. Rooms can be used individually or all as one space for larger meetings and gatherings of up to 100 people.

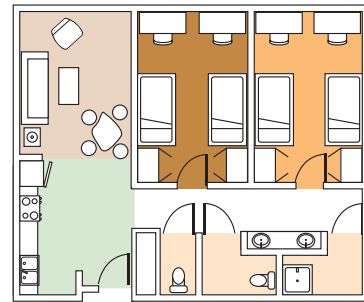
### DINING

The Bistro\* is a modern eatery featuring an open kitchen, sushi bar, and an exciting Pacific Rim-inspired menu. Our chefs draw from various Asian cultures to serve up the best seafood, crisp greens, local produce-inspired vegetarian fare, and noodle dishes. The ideal experience focuses on tasting a variety of flavors and sharing plates with friends.

\*Subject to closures during summer months.

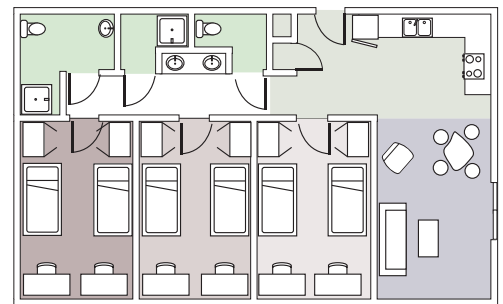
## SAMPLE LAYOUTS\*

### Unit A



Approximate Room dimensions:  
Double - 11 x 17 (187 sq.ft.)  
Single - 11 x 13 (143.5 sq. ft.)  
Kitchen - 7 x 12 (84 sq. ft.)  
Living Room - 14 x 10 (140 sq.ft.)

### Unit C



Approximate Room dimensions:  
Double - 11 x 17 (187 sq.ft.)  
Single - 11 x 13 (143.5 sq. ft.)  
Kitchen - 7 x 10 (70 sq. ft.)  
Living Room - 18 x 11 (268 sq.ft.)

\* Floor plans may vary with guest room type. Other room configurations available.